

OUTSWING DOOR INSTALLATION INSTRUCTIONS  
 BED / BFD

INTERIOR

Remove nail fin

Shim @ screw location  
 Jambas only

locate screws:  
 6" from top and bottom, and  
 equally space (3) more.

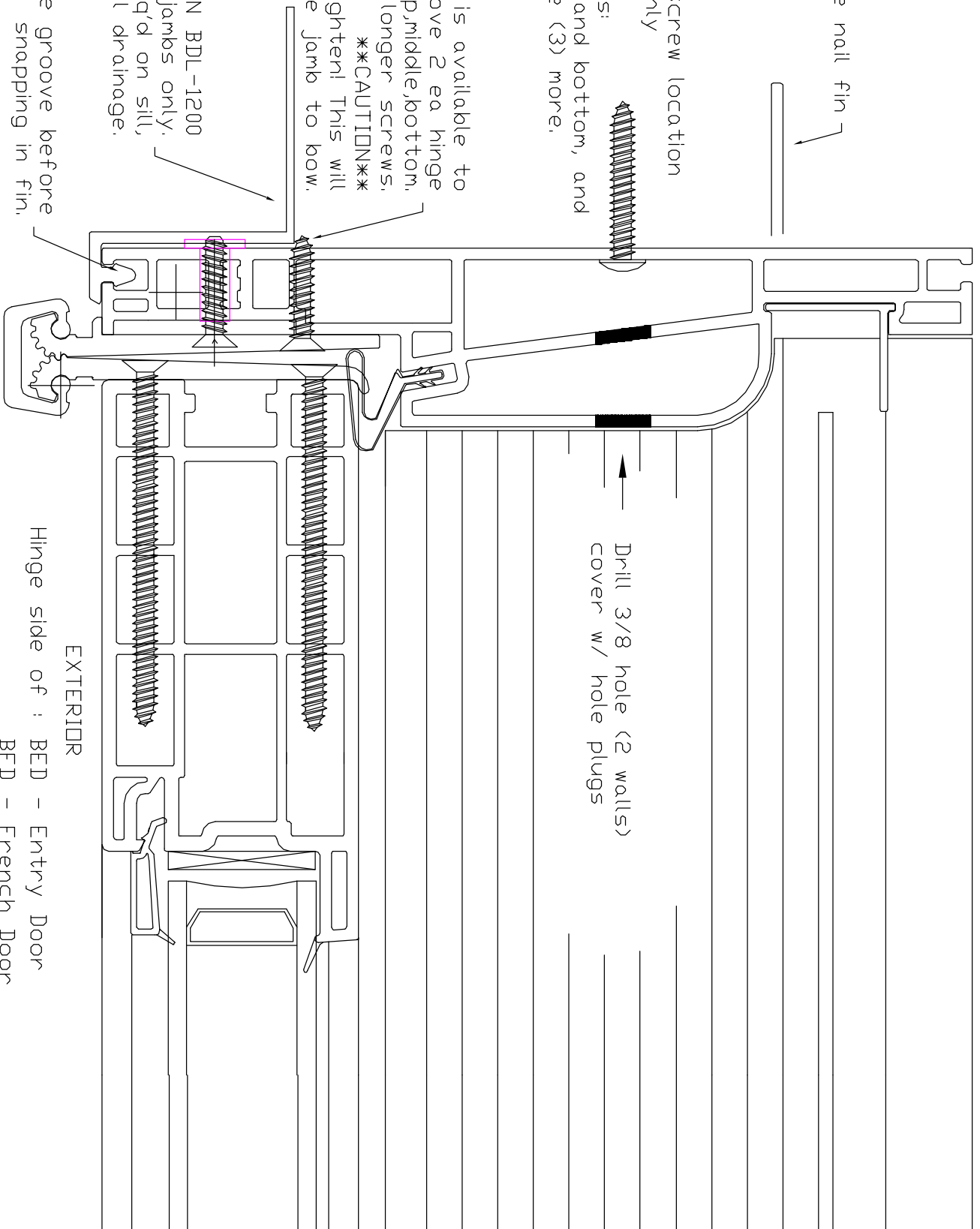
If something solid is available to anchor to, remove 2 ea hinge screws top,middle,bottom, replace with longer screws.

Do not over tighten! This will cause jamb to bow.  
 \*\*CAUTION\*\*

snag in fin P/N BDL-1200 for head and jambas only. If req'd on sill, dremel area for sill drainage.

silicone groove before snapping in fin.

Drill 3/8 hole (2 walls)  
 cover w/ hole plugs



Hinge side of : BED - Entry Door  
 BFD - French Door

4-9/16 SHOWN - 6-9/16 SAME

F DA.dwg 08-02