

## Garden Window Installation (Masonry Wall general guidelines)

### Tools / Materials Required

- 16d casing nails or #7 finishing screws
- backer rod
- high quality sealant and caulk gun
- drill bits
- philips head drill/driver
- hammer / nail set
- wood shims
- carpenters level
- utility knife
- putty knife
- tape measure

**Read all these instructions before proceeding with installation of garden window. These are general guidelines. Different install methods may be required depending on your opening.**

### Preparing for Installation

- Window needs to be finished (stained/varnished). Determine if you want to finish before or after window is installed
- Verify window and opening sizes
- OD width of wood jambs should measure 1/2" smaller than rough opening width. If necessary, build out jambs. (Drawing A)
- Verify that the window features are correct, and that the window is not damaged
- Clean and inspect opening. Check to see if sill is straight and level and above level of brick. If not, shims will be required to level, or a build up may be needed to raise sill above level of brick, as window seat will sit directly on interior wall sill.
- Pre-Drill holes through head and jambs. 3 inches from each corner and no more than 9 inches apart. Drill size to be smaller diameter than diameter of fasteners used. (Drawing A & B)

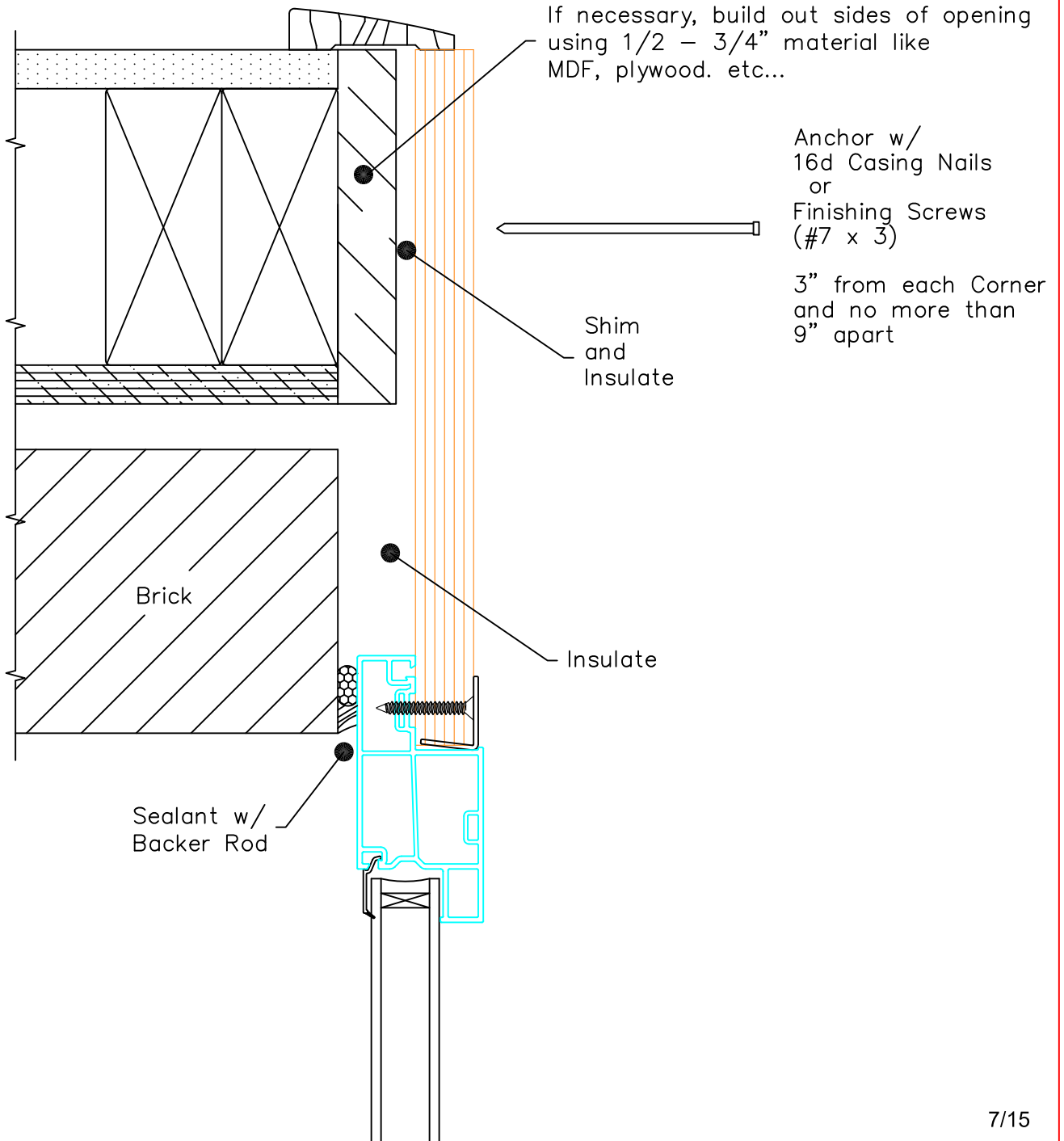
### Installing Window

- Run (2) 3/16" dia beads along top of sill (Drawing C)
- Set unit into opening. Outside installer hold unit into place. Other installer to go inside to center unit in opening checking for level, square and plumb. Ensure that jambs do not go in past interior finished wall. Adjust and shim where necessary.
- With shims behind install holes, drive fasteners through jambs into rough opening (Drawing A & B)
- After head and jambs have been secured, toe nail fasteners through foam on seat board into sill rough opening to secure seat. (Drawing C)
- Using putty knife, push backer rod in between window and brick. Try to maintain equal depth to make sealing easier. Run perimeter bead sealant around window covering backer rod.
- Insulate between jambs and rough opening (Drawing A & B)
- Apply trim
- Install glass shelf (optional)

# Jamb Detail

# Drawing A

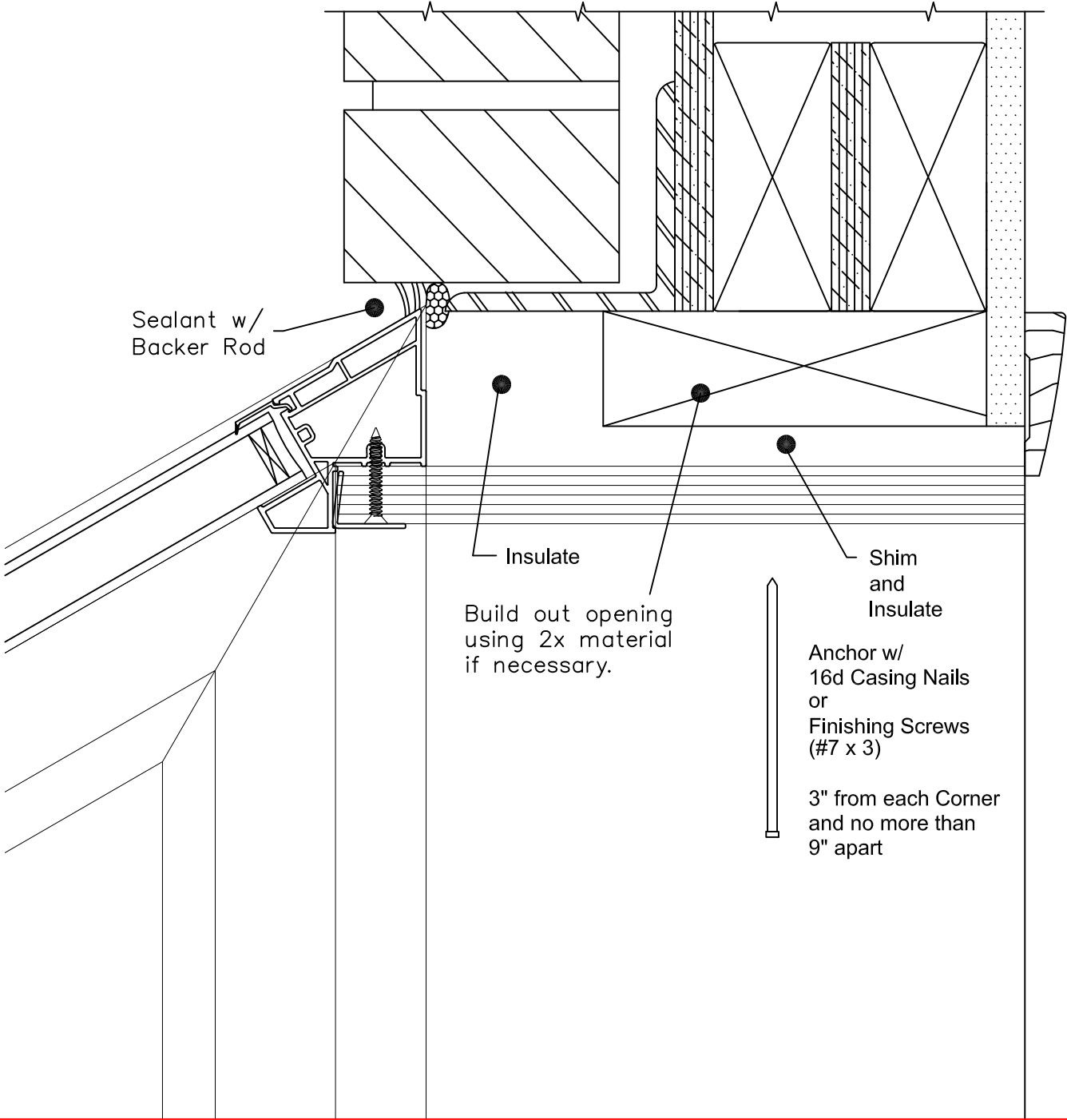
## GW Installation Masonry Opening



Head Detail

Drawing B

GW Installation  
Masonry Opening



# Seat Detail

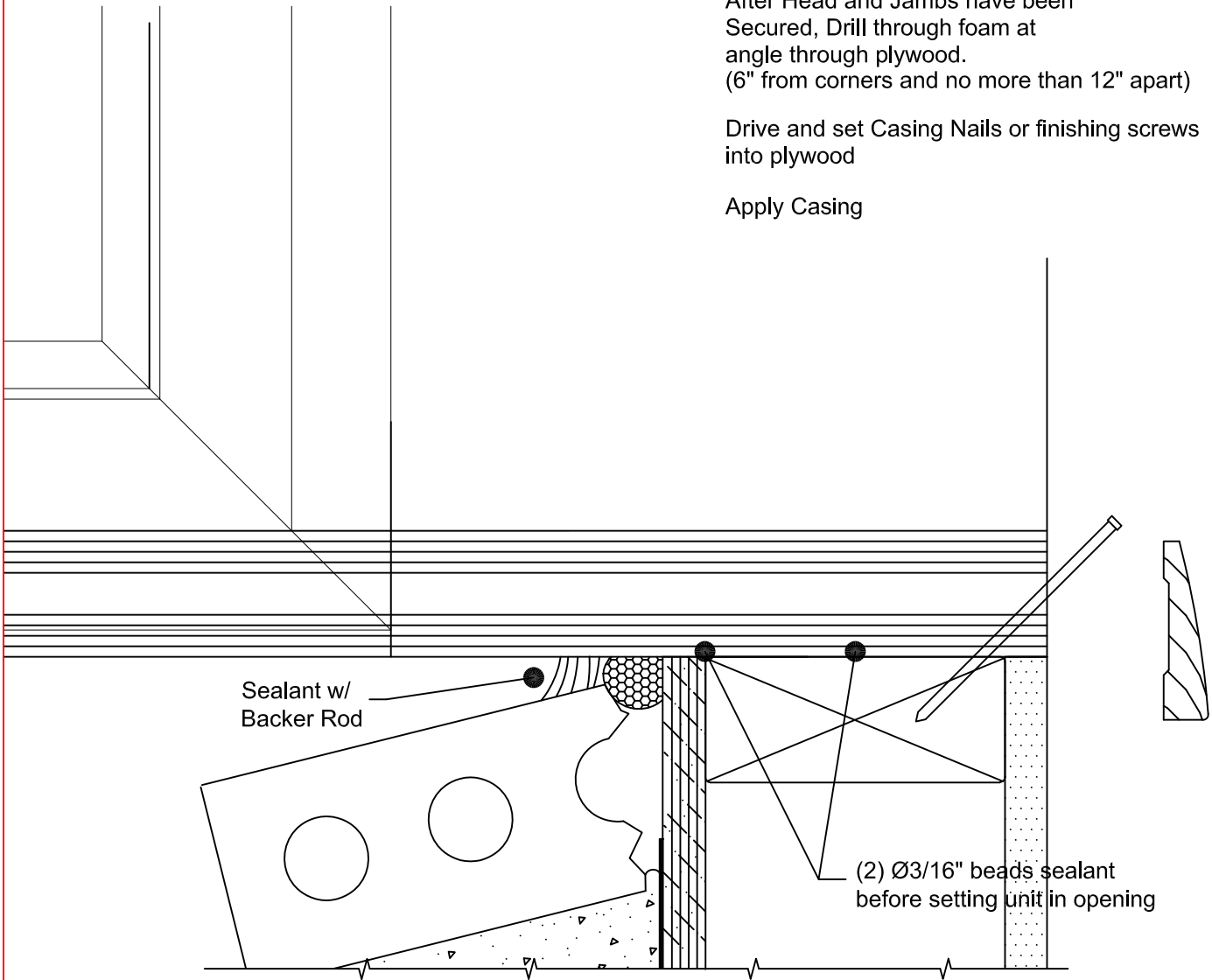
# Drawing C

## GW Installation

After Head and Jambs have been Secured, Drill through foam at angle through plywood. (6" from corners and no more than 12" apart)

Drive and set Casing Nails or finishing screws into plywood

Apply Casing



**Max Load:** 8 lbs SqFt Seatboard  
8 lbs SqFt Shelf